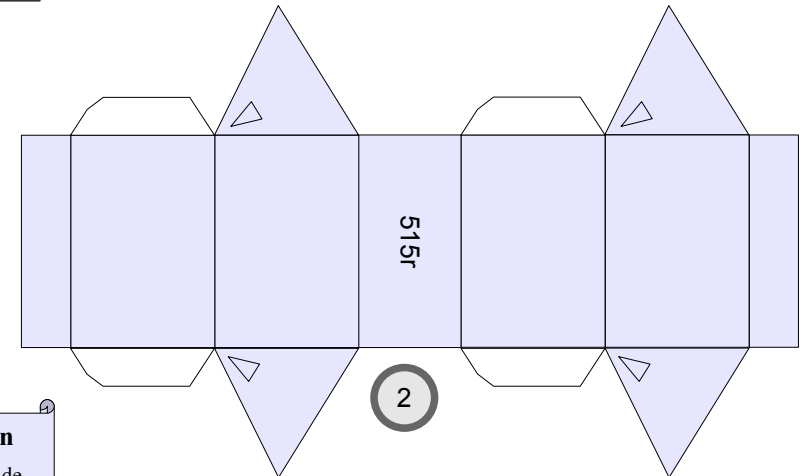
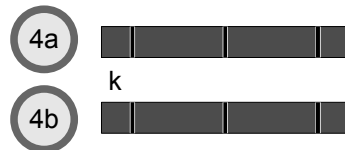
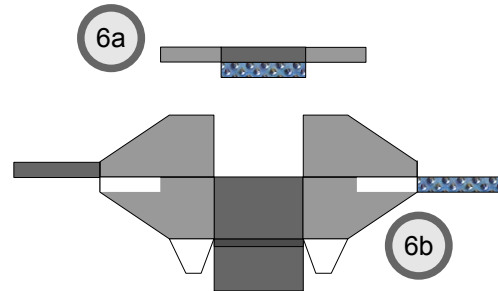
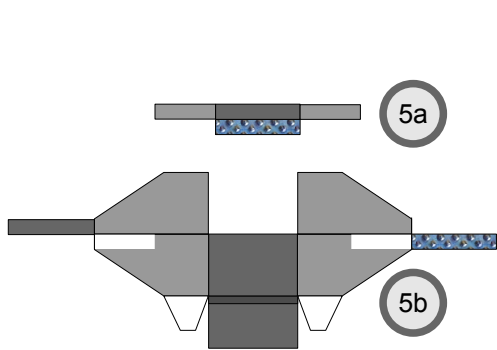
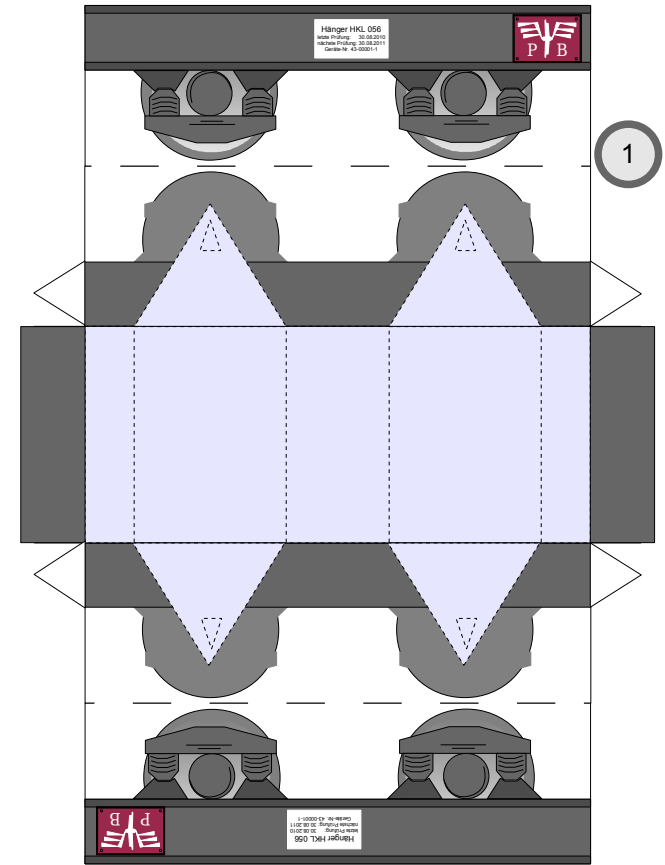
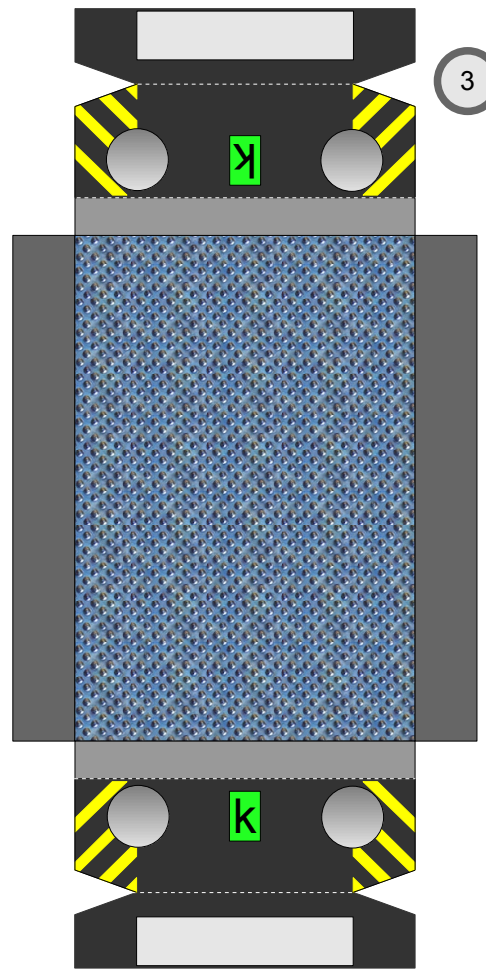


# Модель для сборки No. 515r

Железная дорога – небольшой платформа

трудность - умеренно



Copyright 2006-2011 Boris Voigt, Berlin-Hohenschönhausen  
 © certain rights reserved  
 You aren't allowed to make alterations of this construction paper.  
 Here the sale of these construction papers is prohibited.  
 The distribution of these construction papers free of charge is allowed.



\*PBB 2011\*

Projekt Bastelbogen

[www.projekt-bastelbogen.de](http://www.projekt-bastelbogen.de)