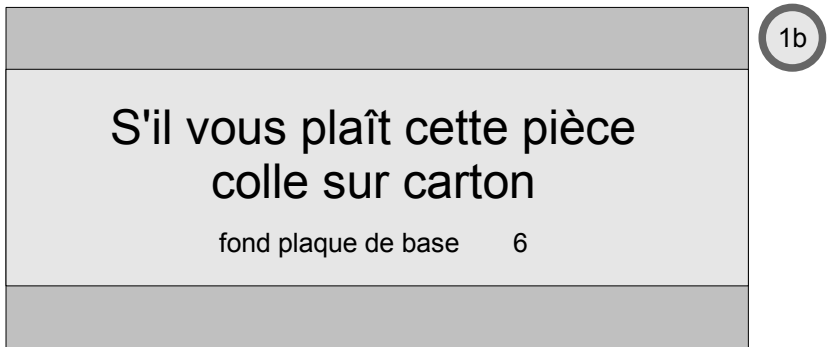
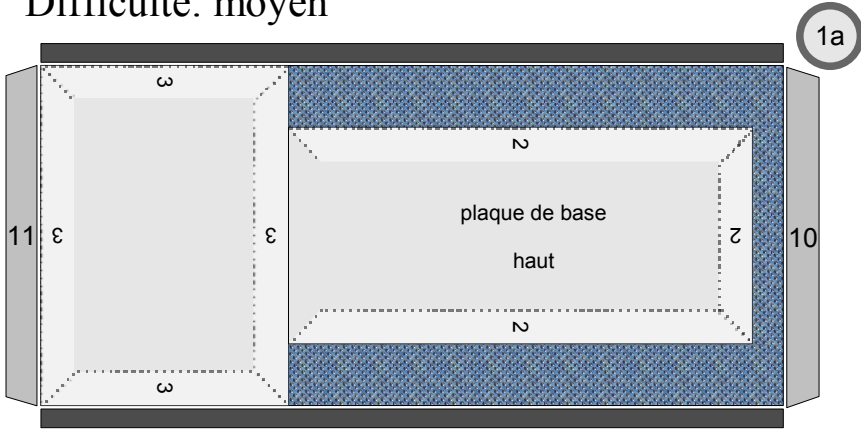


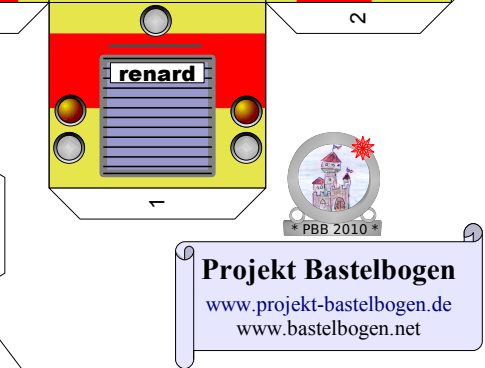
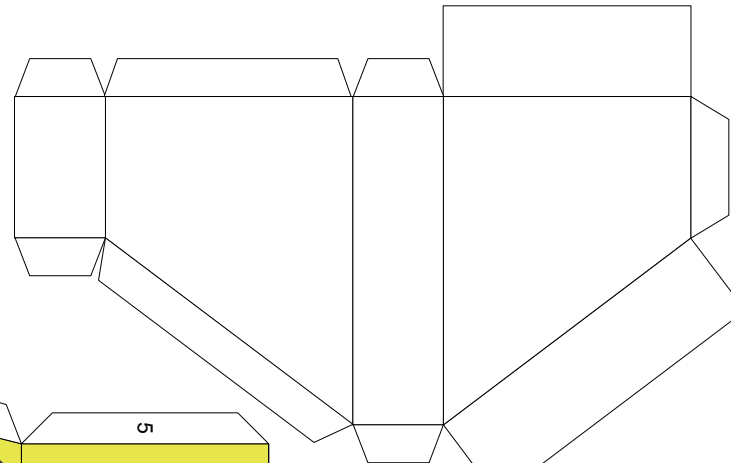
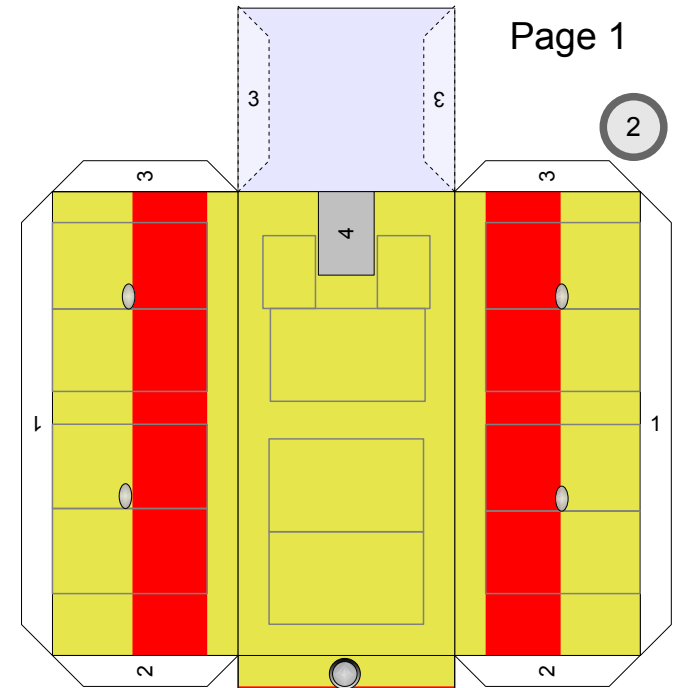
Modeles en papier No. 501c

Chemin de fer – locomotive de manoeuvre

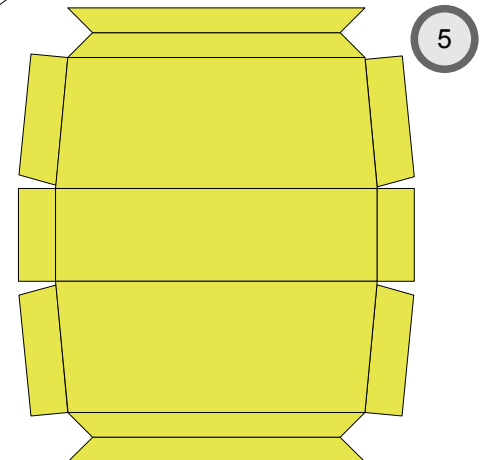
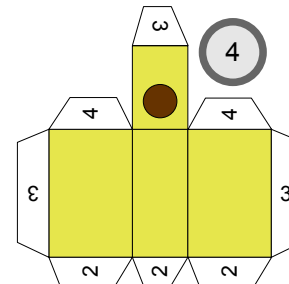
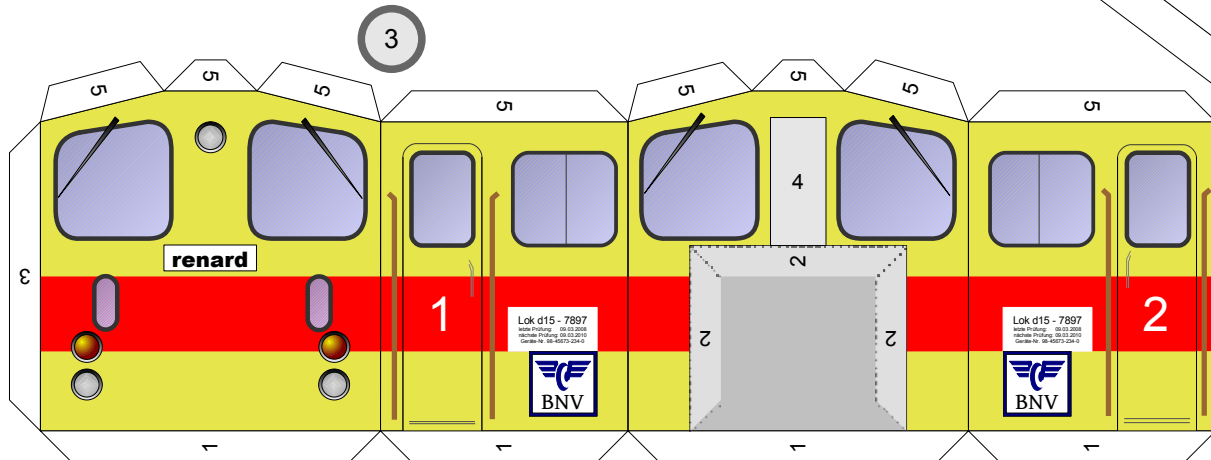
Difficulté: moyen



Copyright 2006-2012 Boris Voigt, Berlin-Hohenschönhausen
 © certain rights reserved
 You aren't allowed to make alterations of this construction paper.
 Here the sale of these construction papers is prohibited.
 The distribution of these construction papers free of charge is allowed.



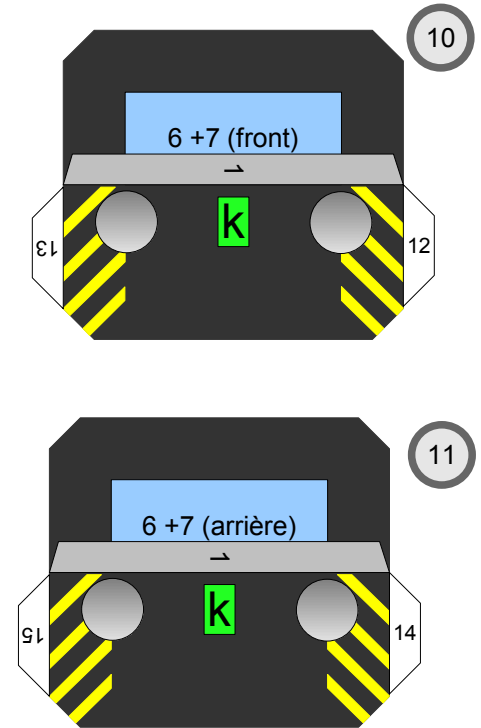
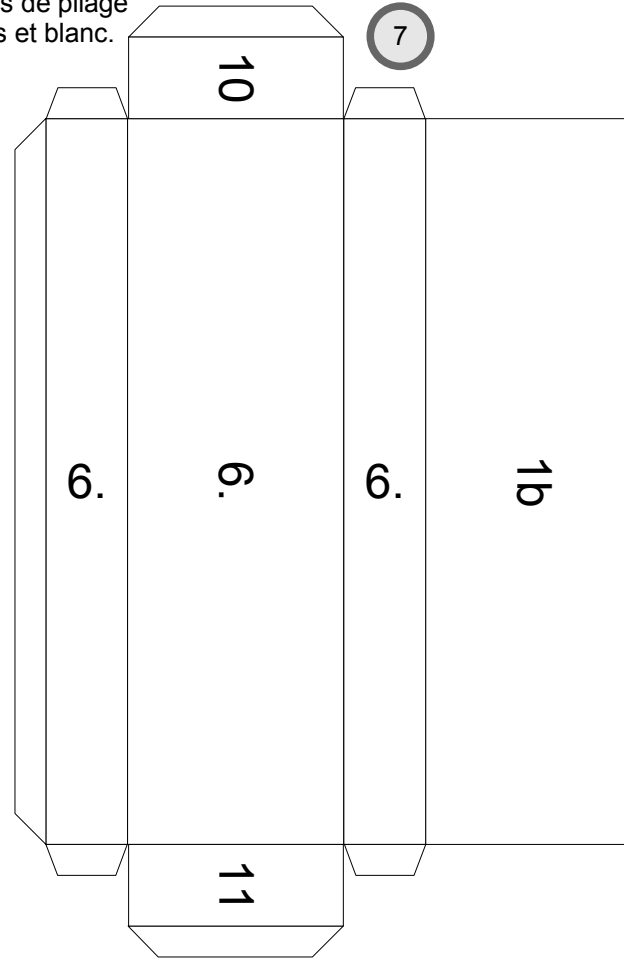
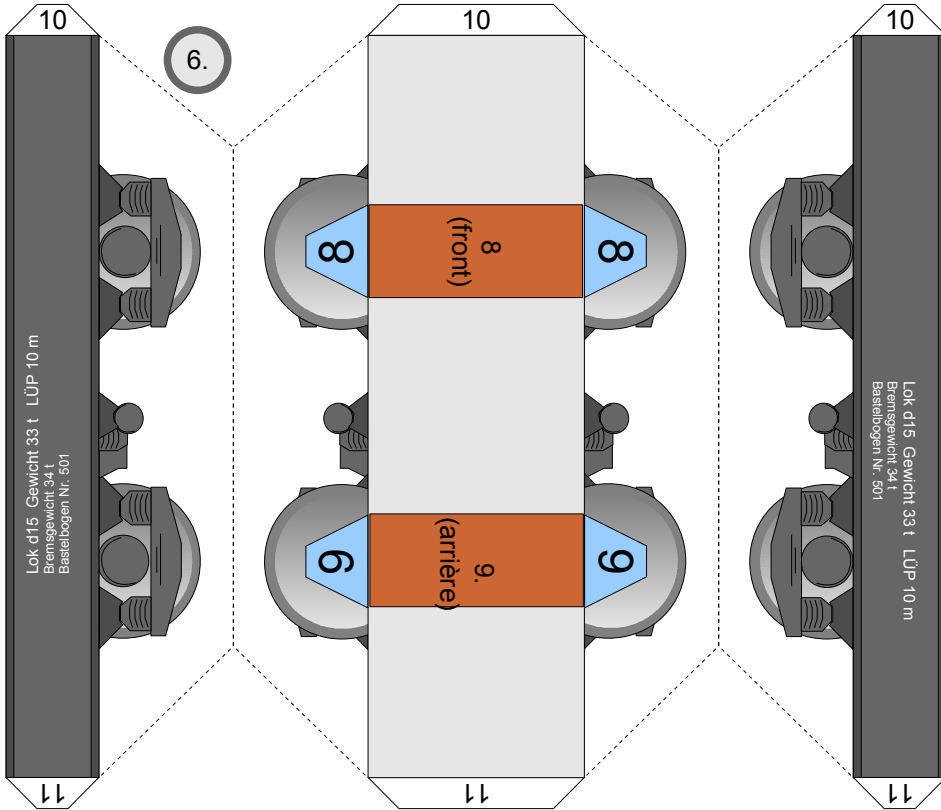
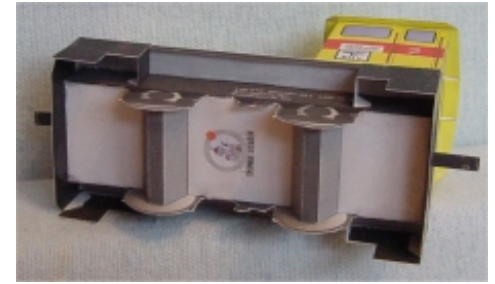
Projekt Bastelbogen
www.projekt-bastelbogen.de
www.bastelbogen.net



Modeles en papier No. 501c

locomotive de manoeuvre

Avant de commencer l'artisanat, vous devriez vous informer au sujet de la position des arêtes de pliage. Vous le trouverez dans la première version de 501 feuilles de la construction. Là, vous voyez, les arêtes de pliage comme un trait noir épais et blanc.



Copyright 2006-2012 Boris Voigt, Berlin-Hohenschönhausen
 © certain rights reserved
 You aren't allowed to make alterations of this construction paper.
 Here the sale of these construction papers is prohibited.
 The distribution of these construction papers free of charge is allowed.

